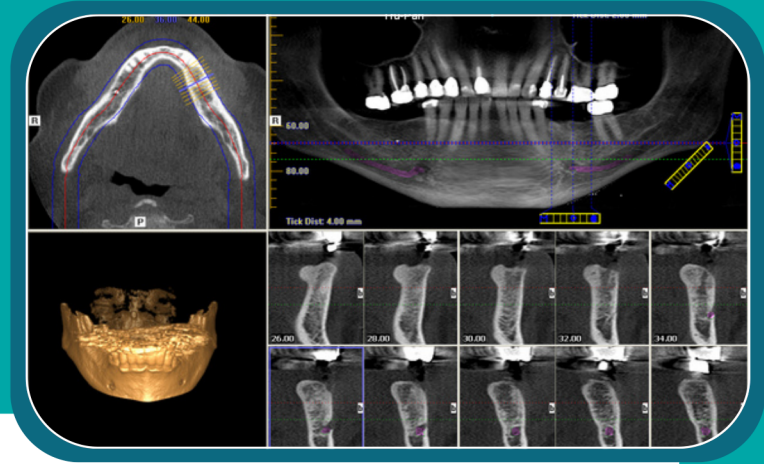


# SURGICAL GUIDE

## SCANNING PROTOCOL



### INTRAORAL SCANS

- Maxillary full arch scan
- Mandibular full arch scan

### CBCT DATA SCANS

- Maxillary: complete arch and sinuses
- Mandible: complete arch
- .2 to .4 mm slice thickness
- Patient in open position during scan – approximately 5mm in anterior

### QUESTIONS?

tel: 980-237-0504

e-mail: [hello@fitzgeraldentalstudio.com](mailto:hello@fitzgeraldentalstudio.com)

